



- Fundamental aspects (Dynamics, modeling, simulation, etc.)
- Process monitoring and control
- Nanotechnology
- Direct write processes (MAPLE-DW, LIFT, etc.)
- Ultra-short pulse laser processing
- VUV laser processing
- Surface treatment (Texturing, cleaning, annealing, modification, etc.)
- Micro-patterning and micro-structuring
- Micro-machining
- 3-D micro- and nano-fabrication
- Drilling and cutting
- Welding and bonding
- Micro-forming
- Wafer dicing
- Marking and trimming
- Packaging and mounting processes
- Lithography (including EUV sources and applications)
- Manufacture of micro devices and systems
- Film deposition and synthesis of advanced materials (PLD, CVD, etc.)
- Nano- and micro-particles
- Medical and biological applications
- Optics and systems for laser microprocessing
- Laser devices
- Industrial applications
- Photochemistry
- Free electron laser material processing
- High-power, single-mode fiber lasers
- Glass/Ceramic processing
- Others

SPONSORS

The Catholic University of America
Japan Laser Processing Society
Office of Naval Research

ORGANIZERS

General Chair

Koji Sugioka
RIKEN, Japan

Co-Chairs

Executive Committee Chair:

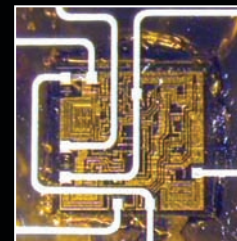
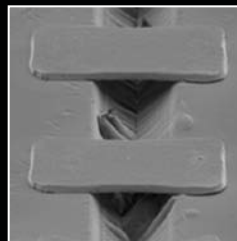
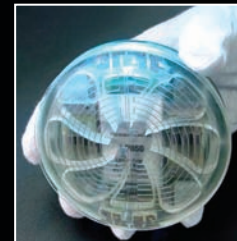
Scott Mathews

CUA Department of Electrical Engineering,
Washington, D.C., U.S.A.

Program Committee Chair:

Alberto Piqué

Naval Research Laboratory, Washington, D.C., U.S.A.



June 12–15, 2012

THE CATHOLIC UNIVERSITY OF AMERICA
Washington, D.C.

Special sessions on novel topics will
be announced in the call for papers.

Deadline for abstracts:

January 15, 2012

LPM 2012

13th International Symposium on Laser Precision Microfabrication
June 12–15, 2012 • Washington, D.C.

AIM AND SCOPE

Modern technology increasingly relies on miniaturization and microfabrication to improve the performance of a wide variety of devices and systems. Lasers and laser processing are uniquely suited to a wide variety of microfabrication applications in both production and research environments, making these topics of significant interest to researchers in both industry and academia.



The annual International Symposium on Laser Precision Microfabrication (LPM) is unique in that it allows researchers from a variety of fields to exchange ideas and techniques, and fosters discussion on the latest research and technological development in laser micro/nano-fabrication.



THE CITY

Officially founded on July 16, 1790, Washington, D.C., is unique among American cities because it was established by the Constitution of the United States to serve as the nation's capital. Today it is a thriving urban center that not only serves as the seat of the federal government but is also home to museums, monuments, art galleries, and some of the nation's finest restaurants and entertainment venues. Its modern and classical architecture rivals any city in the world.

Washington is easily accessible. The extensive Metrorail subway system serves most of the city and surrounding suburbs. It is served by three airports — Baltimore-Washington International (BWI), Dulles International (IAD), and Reagan National (DCA). Visitors who arrive at BWI can take an Amtrak train into Washington, arriving at Union Station, which is located in the heart of D.C.'s federal attractions and is served by Metrorail. Reagan National Airport also is served by Metrorail. Located in northern Virginia, Dulles Airport is served by shuttles.

THE VENUE

The LPM 2012 symposium will take place on the campus of The Catholic University of America in the Edward J. Pryzbyla University Center. The university campus comprises 193 acres located approximately three miles north of the U.S. Capitol. It is served by the Metrorail Red Line at the Brookland-CUA stop and is convenient to downtown Washington, D.C., and adjacent Maryland and Virginia suburbs.

The Pryzbyla Center, completed in 2003, is located at the center of CUA's campus. It offers exceptional conference facilities, including a reconfigurable auditorium with seating for more than 700, state-of-the-art audio-video-lighting systems, conference rooms, a spacious foyer with multiple seating areas, lounges, a Starbucks coffee shop, a cafeteria, a convenience store, and on-site catering for events both large and small.



For information and registration please visit:
<http://engineering.cua.edu/LPM2012> or
www.jlps.gr.jp/lpm/lpm2012